

# Connecté du bureau au tracteur en passant par les bâtiments d'élevage



Drummondville  
31 janvier 2013

Simon M. Guertin  
agronome et ingénieur





# Plus jamais sans mes applis



Agriculteurs connectés ?

Facile, rapide, précis

Mises à jour régulières

Données enregistrées

Base de données

Partage des informations

Intelligence collective

GPS, Photos



Available on the iPhone

**App Store**



Windows Phone

**AppList**



# EVERNOTE

Tout capturer

Accéder depuis n'importe où

Tout retrouver rapidement

Synchronisation automatique

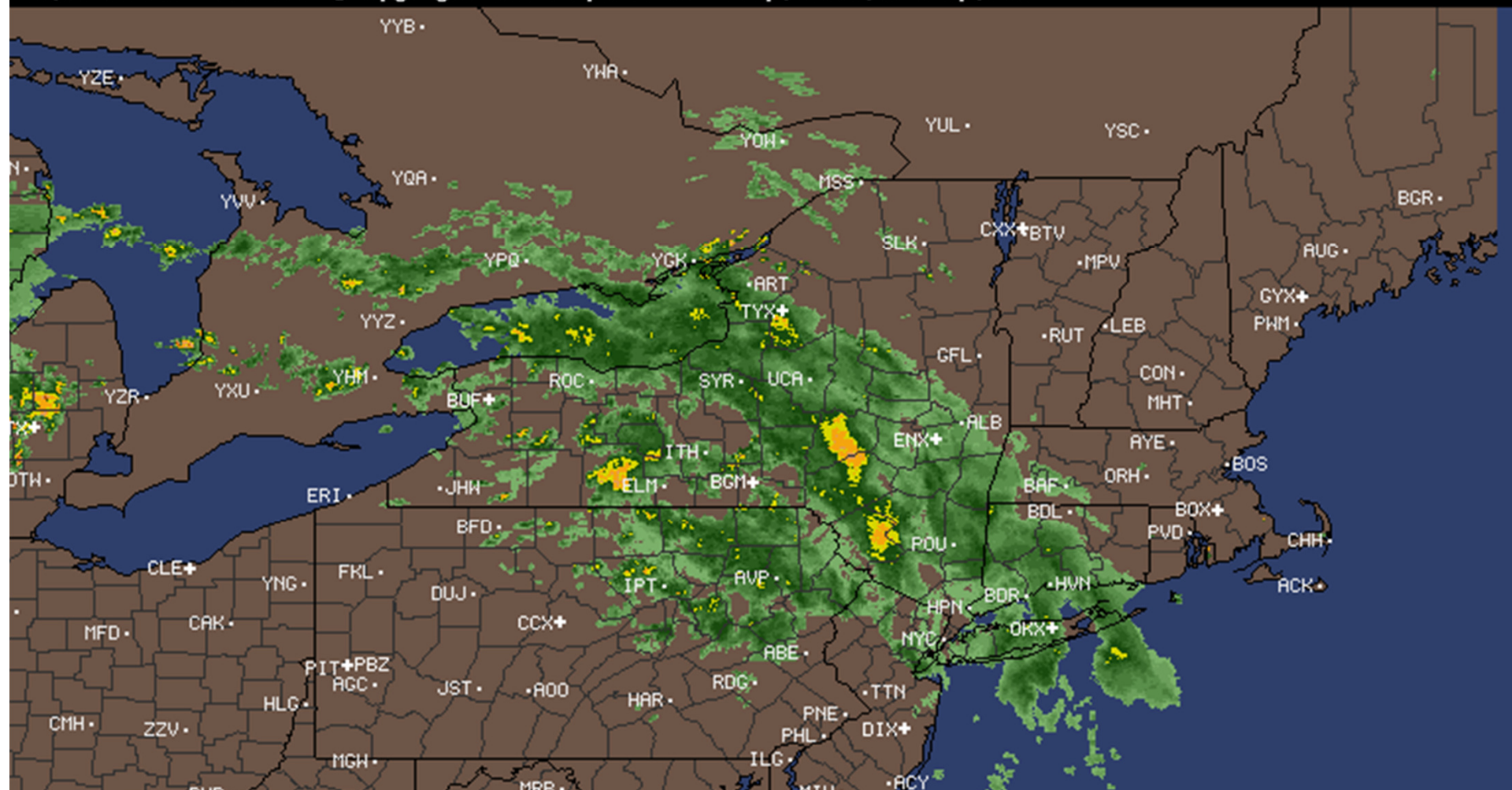
Partage de l'info

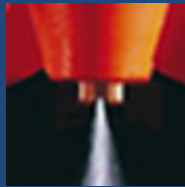




# Alerte pluie

09:00 12-MAY-2000 GMT ©Copyright MSI Corporation <http://www.usicorp.com>





# Buses Hardi

## Introduction

### Bienvenue sur l'outil de sélection des buses HARDI

Cet outil vous aidera à choisir les buses appropriées au traitement envisagé. Choisissez le volume hectare désiré, la vitesse de travaille et les conditions de vent.

Nozzle Calibrator	
Speed km/h	Volume l/ha
5	100
6	125
7	150
8	175
9	200

0.75 l/min.

Flat Fan: Wind still >

LowDrift: Light breeze >

Choisissez le volume hectare désiré, la vitesse de travaille et les conditions de vent.

3G 1:08 PM

LD-110 03-Blue



Pressure: 0.95

Quality: Coarse

Max: 6.8 km/h

Min: 3.7 km/h

### Part numbers

Cap

1 pcs.: 371840

6 pcs.: -

12 pcs.: 755711

No Cap

1 pcs.: 371820

6 pcs.: -

12 pcs.: 755701

Info: HARDI ISO LD-110 - LowDrift nozzles. LowDrift nozzles are recommended when optimum spraying conditions cannot be achieved (risk of drift) and spraying cannot be postponed. This nozzle will give you excellent and uniform liquid distribution at boom heights from 35 to 70 cm (50 cm



# Aphid Advisor

iPod 10:48 AM

Warning *Aphid Advisor* Next

## Temperature

Default temperature settings are based on long-term averages for Ontario (avg min 16.9°C, avg max 27.5°C). If the temperature forecast for your area differs greatly, enter the average minimum and average maximum temperatures for the upcoming week.

Average Minimum:  °C

Average Maximum:  °C

Assess Results About Settings

iPod 10:48 AM

Temp *Aphid Advisor* Next

## Aphid Pressure

Count the aphids on soybean plants at different locations in your field.

It is recommended that you count the aphids on at least 10 plants and sample plants at least 5m apart throughout your field.

Enter the total number of aphids observed on each soybean plant. You can enter as many plants as you wish.

# Aphids  Add

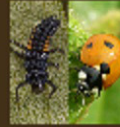
Assess Results About Settings


iPod 10:48 AM

Pressure *Aphid Advisor* Next

## Natural Enemies

Examine 10 random soybean plants in your field. Enter the total number of natural enemies that you have found.

 Lady Beetles

 Mummies

 Orius

Assess Results About Settings





# Convertisseur d'unités

3G 1:16

Category Selection  
Length / Distance  
길이/거리

Unit Selection Value

foot, ft 21.5

metre, meter m	6.5532
kilometer km	0.0065532
hectometer hm	0.065532
dekameter dam	0.65532
decimeter dm	65.532
centimeter cm	655.32
millimeter mm	6553.2
micrometer μm	6553200
foot ft	21.5
inch in	258
mile International	0.000001609347





Favorite Categories Favorite Units

3G 1:26

Category Selection  
Currency Exchange Rate  
Taux de change

Unit Selection Value

USD, U.S. Dollar 1

USD U.S. Dollar	1
 USD U.S. Dollar	1
EUR European Euro	0.6887
 EUR European Euro	0.6887
AUD Australian Dollar	0.9411
 AUD Australian Dollar	0.9411
CAD Canadian Dollar	0.9756
 CAD Canadian Dollar	0.9756

Favorite Categories Favorite Units

# Visite de salons



AGENDA

jours catégorie

dimanche	24	11
février		
lundi	25	14
février		
mardi	26	12
février		
mercredi	27	11
février		
jeudi	28	6
février		

AGENDA

## Tous

08	08:30 - 09:30	Dans un mois
☆	Meat cattle weigh-ins	Hall 1
09	09:30 - 11:30	Dans un mois
☆	Young Clippers International Challenge	Hall 1
11	11:30 - 12:30	Dans un mois
☆	Bringing Biogas to the Grid: Let's Go!	Hall 3

75<sup>th</sup>  
EDITION

# SIMA

SIMAGENA SIMAVIP

MONDIAL DES FOURNISSEURS DE L'AGRICULTURE ET DE L'ÉLEVAGE  
PARIS INTERNATIONAL AGRI-BUSINESS SHOW

100%  
innovation

compositum

## AGENDA

# Tous

08

08:30 - 09:30

Dans un mois



Meat cattle weigh-ins  
Hall 1

09

09:30 - 11:30

Dans un mois



Young Clippers International  
Challenge  
Hall 1

11

11:30 - 12:30

Dans un mois



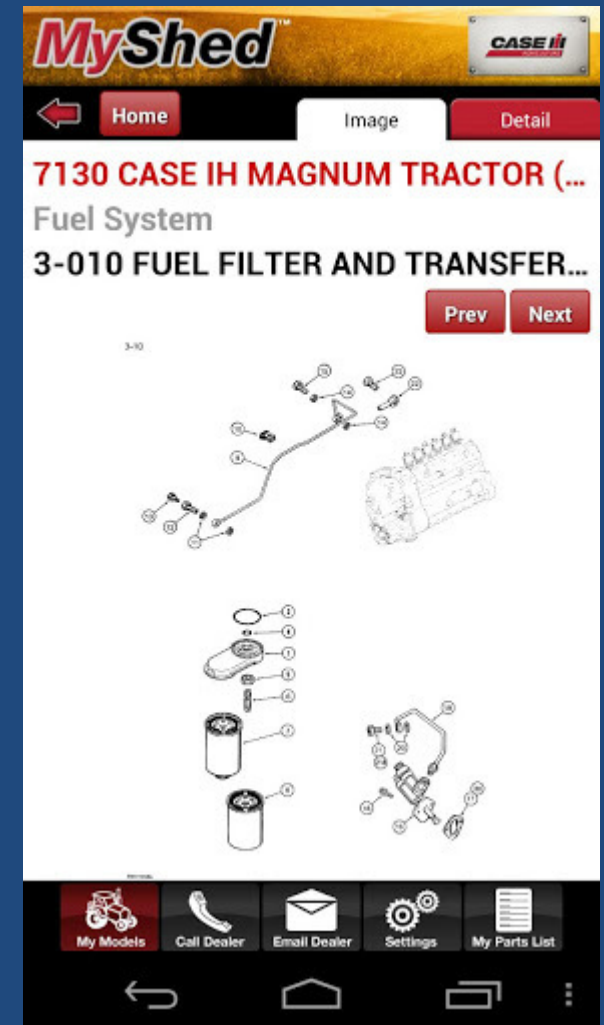
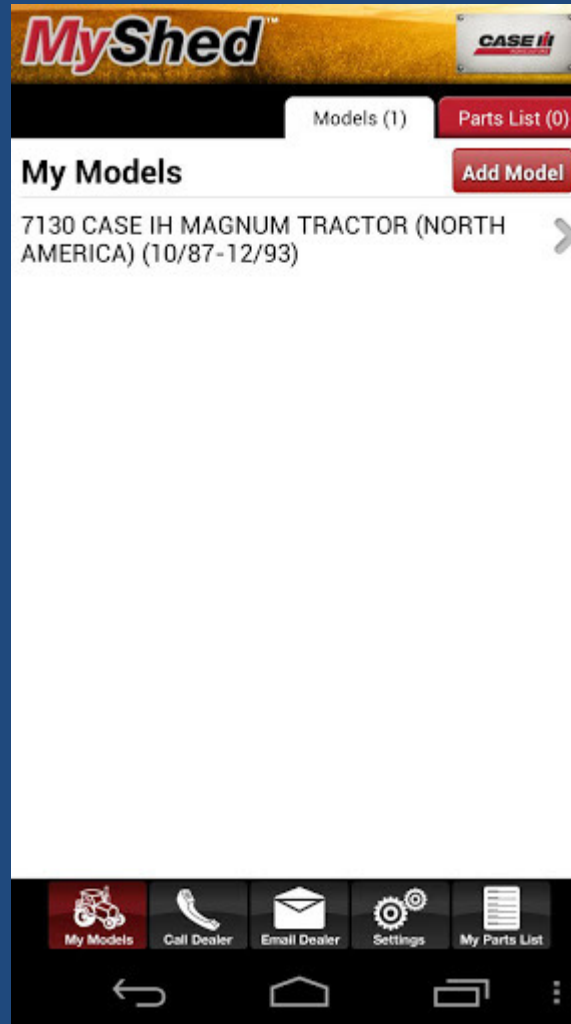
Bringing Biogas to the Grid: Let's  
Go!  
Hall 3

## MAP

# tous



# Entretien des équipements





# MyShed™

Username:

Password:

Login



Forgot Password

Create Account

## MyShed™



Models (1)

Parts List (1)

### My Parts List

Email List To Dealer

Model: 4626 - 7130 CASE IH MAGNUM  
TRACTOR (NORTH AMERICA)  
(10/87-12/93)

Assy: 02-48-486-12163 - 3-010 FUEL  
FILTER AND TRANSFER PUMP,  
6T-830 ENGINE, 6TA-830 ENGINE

Part: J915240 - HEAD fuel filter, Replaces: P/N  
J904362 head

Qty:



My Models



Call Dealer



Email Dealer



Settings



My Parts List

## MyShed™



### Email Dealer

My Dealer  
123 Dealer St  
City, Wisconsin, US

Phone: 111-111-1111

Fax: 111-111-1111

Email: DealerEmailHere@generic.com

Hours: Monday - Friday: 7:30 am - 5:00 pm  
Saturday: 7:30 am - 1:00 pm  
Sunday: Closed

Photo:

Include My Parts List:

Message:



My Models



Call Dealer



Email Dealer



Settings



My Parts List



# Gestion des équipements

USER: AGRARGENOSSENSCHAFT AGCO

AGCOMMAND



Help

Logout

At A Glance

History

Report

Administration

Fleets & Machines

Fleet tree

Combine Fleet

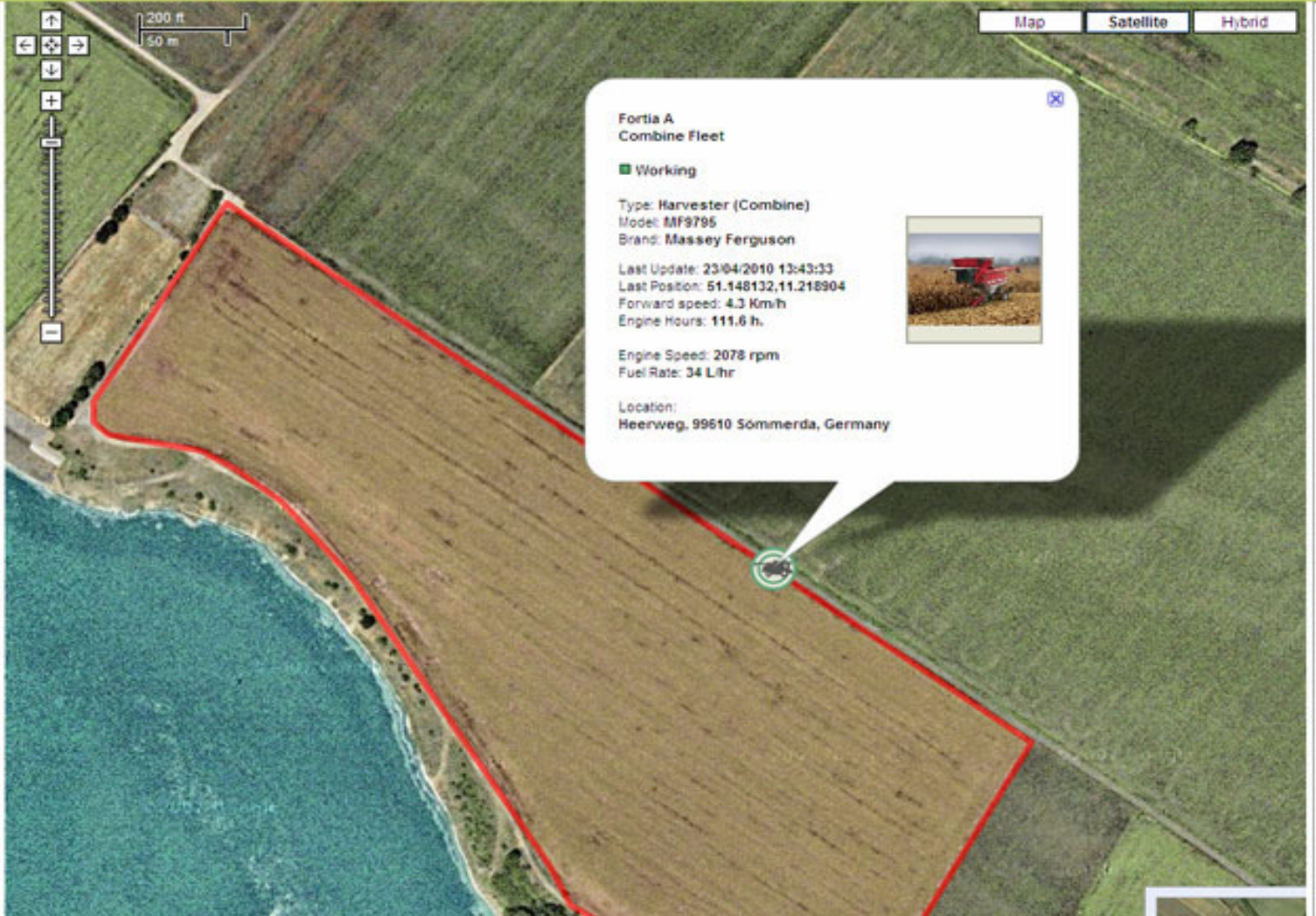
- Fortia A
- Fortia B
- MF7278
- MF7278\_1

Tractor Fleet

- MF8690
- Tractor\_1
- Traktor\_2
- Traktor\_3
- Traktor\_4

Transport Fleet

- MF6499
- MF7495
- MF7495\_1
- MF8400
- MF8690\_1



Fleet Summary

- 11 OFF / Parked
- 04 Stopped / Idle

USER:



Help

Logout

At A Glance

**History**

Report

Administration

Search parameters

17  
Date selector

Quick:   
From: 01/08/2009 00:00:00  
To: 10/08/2009 23:59:59

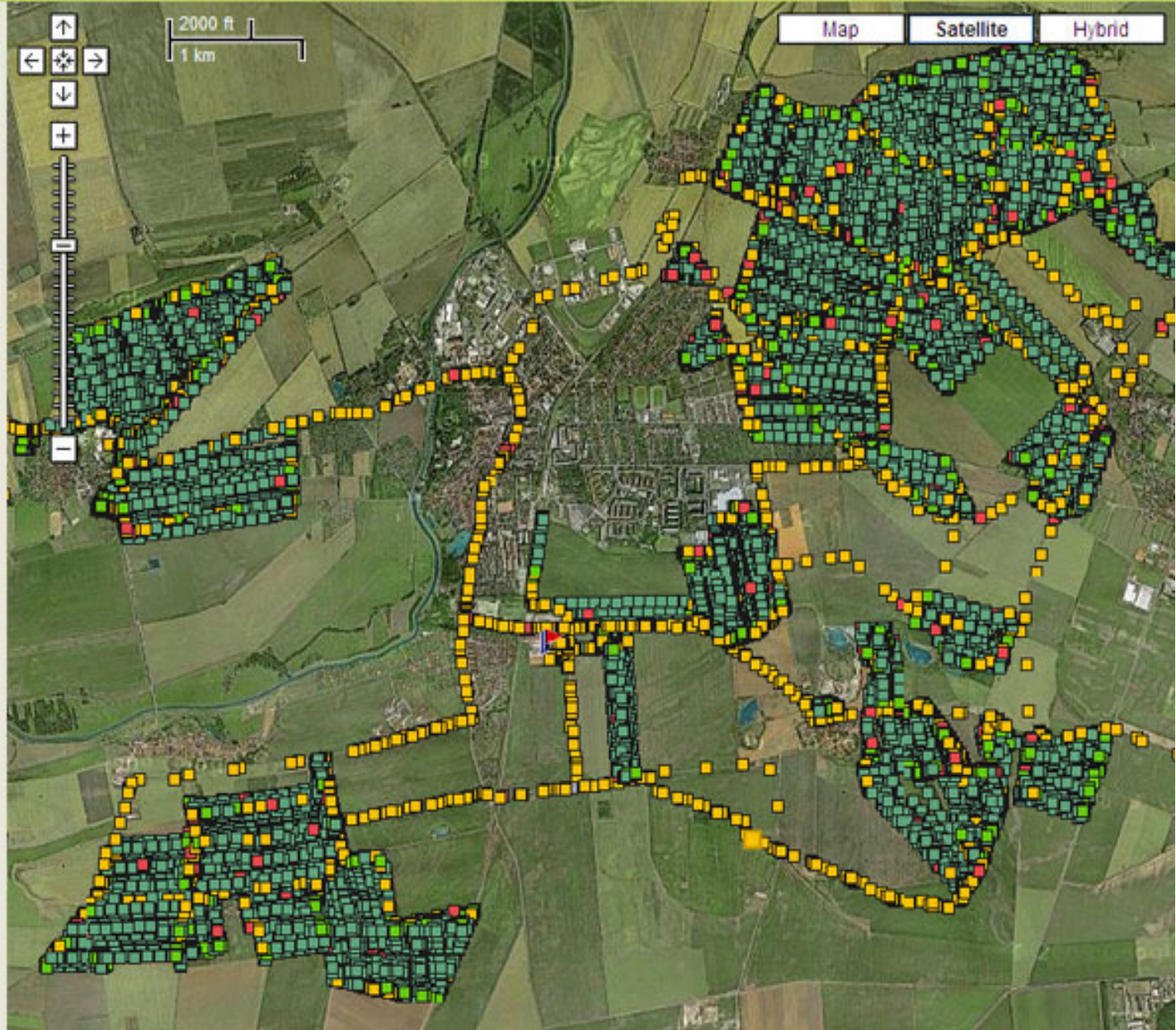
Machine selector

- GERMAN pilot
  - MF7282-62281
  - MF7282-62282
  - MF7282-62552
  - MF7282 AL-62529



2000 ft  
1 km

Map Satellite Hybrid



Map Satellite Hybrid

**Report**

Field Report - Gattenberg - Area: 6.24 ha, Perimeter: 1111.11 m

Time entered field	Time left field	Machine name	Duration inside field	Working	Stopped / Idle	Headland Turning	Transport	Off time	
07/08/2009 15:36:12	07/08/2009 15:46:09	MF7282	00:09:57	00:05:36	00:00:17	00:00:00	00:00:08	00:03:56	●●●
07/08/2009 15:46:14	07/08/2009 15:48:10	MF7282	00:01:56	00:00:17	00:01:05	00:00:00	00:00:20	00:00:14	●●●
07/08/2009 15:49:10	07/08/2009 17:00:10	MF7282	01:10:60	00:46:41	00:11:35	00:06:54	00:02:03	00:03:47	●●●
		<b>Total</b>	<b>01:22:53</b>	<b>00:52:34</b>	<b>00:12:57</b>	<b>00:06:54</b>	<b>00:02:31</b>	<b>00:07:57</b>	
		<b>Total work time</b>		<b>01:01:59</b>					

●●● Transport time is more than 15% of work time  
●●● Idle / Stopped time is more than 40% of work time

Close

Metrics, Map data ©2009 Tele Atlas - [Terms of Use](#)

Schallert





bienvenue à la ferme



© Bienvenue à la ferme - Réalisation Wayma



Recherchez parmi nos thèmes



Achat de produits



Restauration à la ferme



Activités à la ferme



Chambres d'hôtes



Gîtes



Camping et camping-car

# Gestion des ...



drinkdroid

Alcool Ajout Totaux Histor Config

- Biere**  
demi, pinte
- Champagne**  
coupe, flute
- Cocktail**  
cocktail
- Pastis**  
petit jaune
- Shooter**  
petit verre alcool fort

DrinkDroid

Alcool Ajout Totaux Histor Config

**Homme / Femme**  
homme

**Poids**  
Votre Poids :90 Kg

**Taux Legal**  
alcoolemie légale :0.5 g/L

Actions à effectuer en quittant

**nombre verres bu à zéro**   
Remettre à zero le nombre de verres bu en quittant

**alcoolemie max à zéro**   
Remettre à zero l'alcoolemie max



Taux d'alcool 0.52g/l  
Conduite dans :0 h41 min  
Sobre dans :4 h01 min

Rafraichir

Nombre de verres: 2